

StrojCAD

DKP 6 – DOUBLE SAW BLADE ANGLE SAW



A saw with two perpendicular saw blades enables cutting in both directions, what considerably increases a sawmill cutting capacity.

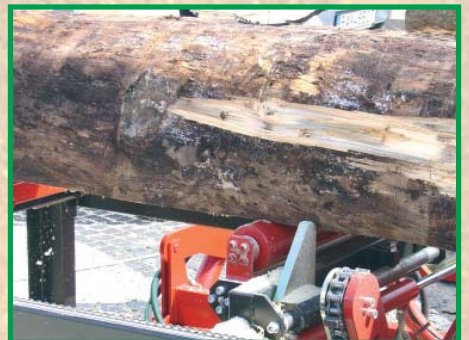
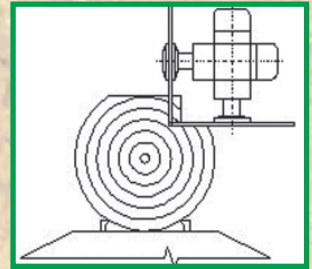
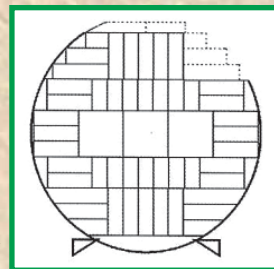
The angle circular saw is a versatile machine for the radial lumber, carpenter lumber and palette lath production. Quick and accurate electronic cut control and safe hydraulic log positioning guarantee invariable high productivity and safety at work.

The angle circular saw is a machine that:

- produces lumber with saw-cut dimension accuracy up to $\pm 0,5\text{mm}$
- carries up to 70% -75% of yielding
- produces lumber of excellent surface quality
- results in very low operational costs
- can be used in a year-round three-shift operation

Technical parameters:

Saw blade diameter (optional)	400, 450mm 500, 550 mm
Manageable log diameter max.	1000 mm
Manageable log length	max. 12 m
Saw-cut dimensions max. (with saw blade \varnothing 550 mm)	210x210 mm
Main feeding motors power	2x22 kW
Cutting capacity	1,3-2 m ³ per hour



UH 500 – ANGLE SAW

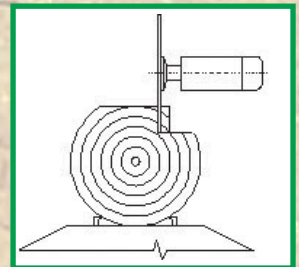
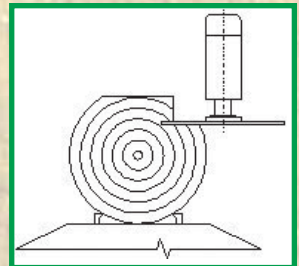


An angle saw UH500 with one tilting saw blade for final quality lumber production and OMRON computer control unit guarantees profitable economic return of the investment, thanks to low installing input power, reasonable price, low operating costs and standard cutting capacity.

By default, the saw is supplied with a mechanical log fixing mechanism, but can be custom made with a hydraulic log positioning mechanism, what not only facilitates log positioning and convenient operation, but also increases yielding remarkably. The saw represents an ideal combination of angle circular saw advantages and the competitive price.

Technical parameters:

Saw blade diameter (optional)	400 – 550 mm
Manageable log diameter max.	800 mm
Manageable log length max.:	12 m
Saw-cut dimensions max. (with saw blade Ø 550 mm)	200x200 mm
Main electric motor power	15 kW
Cutting capacity (logs)	0,7 – 1 m ³ per hour



UP 700 – ANGLE SAW



A circular tilting saw UP700, similar but more solid version of UH500, has been designed for heavy sawmills processing timbers of bigger diameters. Processing mechanism and the operating advantages are similar to the UH500 model.

The level of electronic control, cutting method and machine operation are comparable with other models, but it has more solid frame and offers to use the saw blades up to 700 mm in diameter.



Technical parameters:

Saw blade diameter (2800 rpm motor) (optional)	400 – 550 mm
Saw blade diameter (1450 rpm motor) (optional)	700 mm
Manageable log diameter max.	1000 mm
Manageable log length max.	12 m
Saw-cut dimensions max. (with saw blade Ø 550 mm)	230x240 mm
Saw shaft speed	1400 or 2900 rpm
Main electric motor power	18,5 – 22 kW
Cutting capacity (logs)	0,9 – 1,4 m ³ per hour

KP58 – DOUBLE SAW BLADE LOG SAW



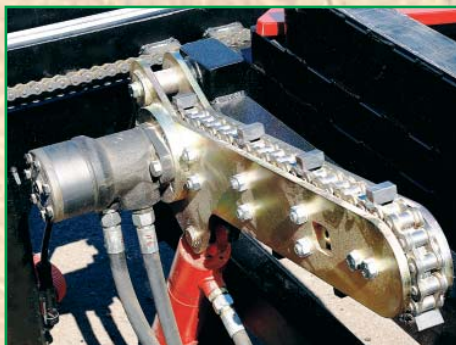
A horizontal log saw KP58 is ideal for producing building lumber. The saw in longitudinal log cutting uses a pair of horizontal saw blades for production of untrimmed and trimmed planks, deals, blanks and prisms.

The accurate, computer controlled cut dimension setting is a standard feature for a higher operation comfort. Thanks to the saw blades that actually incise into the log centre and throw the dirt outward the wood, the saw blade wearing is minimal.

The standard equipment for a hydraulic includes – loader, tiltable centring hydraulic supports, turner and fixing device with adjustable height – can facilitate when the log needs to be positioned horizontally lengthwise.

Technical parameters:

Main electric motors power	2x11kW or 2x15kW
Manageable log diameter	100 mm – 600 mm
Manageable log length max.	12 m
Cutting latitude max.	450 mm
Cutting height max.	140 mm or 160 mm
Cutting capacity (logs)	1 – 1,6 m ³ per hour



SCAD 700 – BAND-SAW



This band saw matches the needs of carpenters, craftsmen or builders, providing that not capacity but good lumber quality and opportunity to cut on the place of felling or processing are crucial criteria. Small machine proportions and low weight enable effortless manipulation and allow easy transport behind a passenger car. Cutting height adjustment is manual controlled by vernier wheel. The carriage feeding movement, when cutting, is adjustable by hand as



well. A saw band is water-cooled and hydraulic tensioned. The saw can be supplied with an electric or a fuel main motor.

Technical parameters:

Manageable log length min.	2,7 m
Manageable log length max.	12 m
Frame module length	3790 mm
Above table cutting height	30 mm
Main electric motor power	5,5 kW or 7,5 kW
Main fuel motor power (alternatively)	9,7 kW (13 HP)

SCAD 800 – BAND-SAW



SCAD 800 is a professional band saw designed to be used in sawmills. It has a solid stable frame with a fine fit of the band. Tensioning of the band is hydraulic, with a tension indicator, and the band itself is water-cooled.

Cutting height (plank thickness) is electronically controlled. A pre-cut function is a machine standard outfit, protecting a band from any dirt in covering bark. Log fixing is manual controlled. However, when ordered, the saw can be also supplied with a hydraulic log positioning equipment.

Technical parameters:

Log diameter max.	800 mm
Log length max.	12 m
Wheel diameter	600 mm
Saw band width	35 – 45 mm
Saw band length	5000 mm
Main electric motor power	7,5 kW

Dealer:



StrojCAD s.r.o.

Lastomírska 2
07101 Michalovce
Slovakia

Tel./Fax: +421 56 6442233

Tel./Fax: +421 56 6425219

www.strojcad.sk

e-mail: info@strojcad.sk